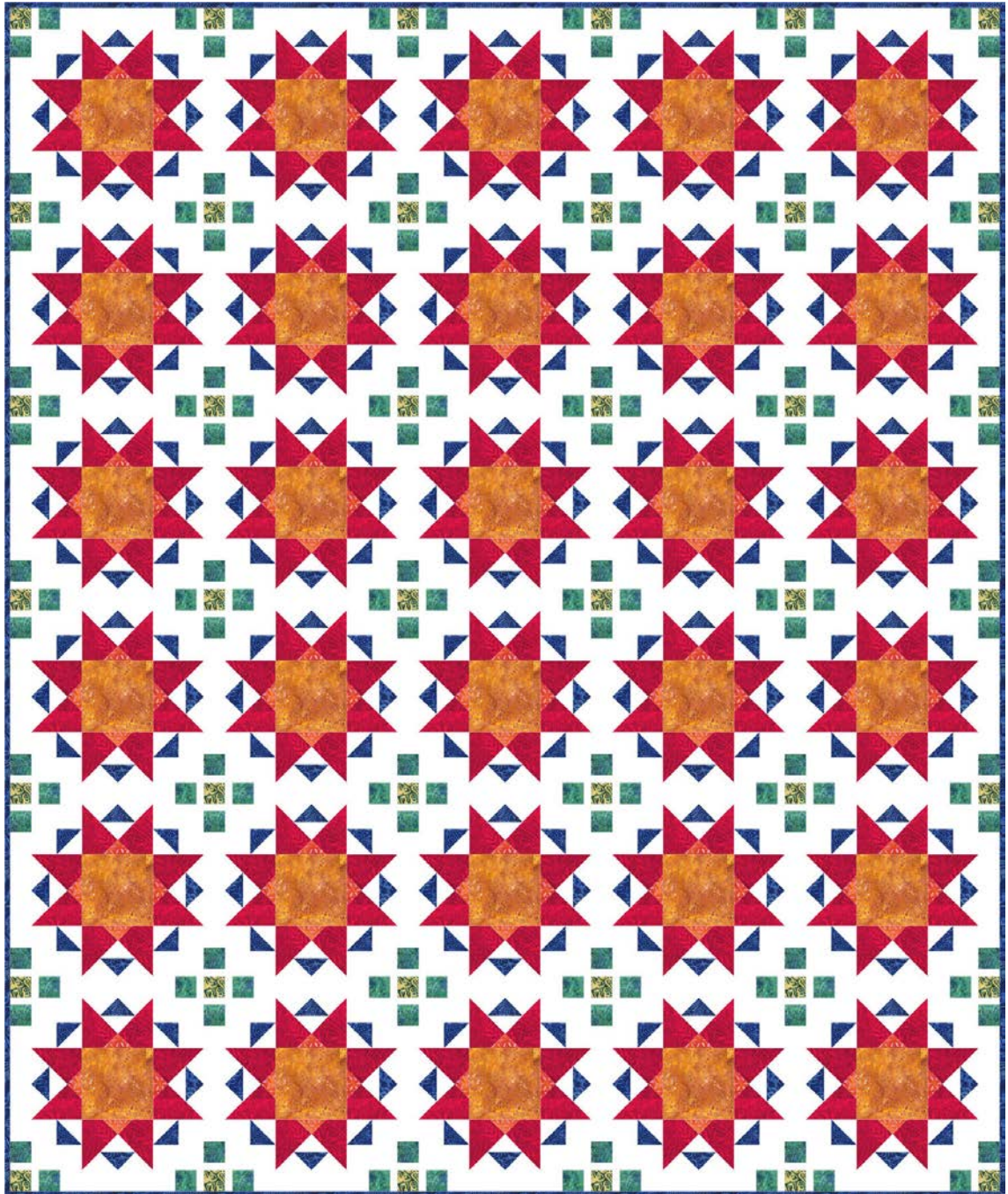


Fanfare

designed by Christine Stainbrook of Project House 360
featuring Art Inspired - Sea Battle by Anthology Fabrics

SIZE: 69" x 83"

FREE
PROJECT



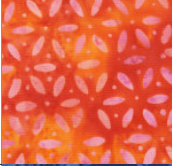






THIS IS A DIGITAL REPRESENTATION OF THE QUILT TOP, FABRIC MAY VARY.

PLEASE NOTE: BEFORE MAKING YOUR PROJECT, CHECK FOR ANY PATTERN UPDATES AT WINDHAMFABRICS.COM'S FREE PROJECTS SECTION.



Fanfare

KEY	FABRIC	SKU	YD	CUTTING INSTRUCTIONS
A		100Q-1045 white	4 1/2	60 - 4 3/8" squares 240 - 2 1/4" x 3 1/2" 120 - 2 5/8" squares 8 - 1" x WOF (width of fabric) 4 - 8 1/2" x WOF
B		223Q-3 red	2	120 - 4 3/8" squares
C		229Q-5 red	1/2	30 - 3 1/4" squares
D		221Q-5 royal	1 1/2	120 - 2 5/8" squares
E		230Q-5 gold	1	30 - 5 1/2" squares
F		227Q-3 multi	1/4	42 - 2" squares
G		225Q-5 jade	3/4	8 - 2" x WOF
		Backing	5-1/2	Batting 70" x 94"



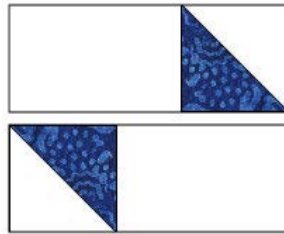
Fanfare

Blocks:

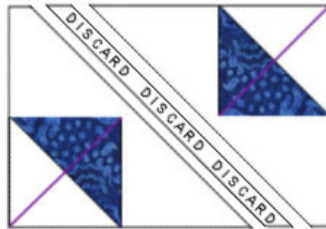
Make 30

Use the fabric A and fabric D $2\frac{5}{8}$ " squares to make 240 half-square triangle units. Square to $2\frac{1}{4}$ ".

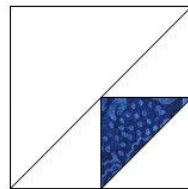
Stitch one fabric A $2\frac{1}{4}$ " x $3\frac{1}{2}$ " rectangle to each unit and stitch the units together in pairs as shown.



Draw a diagonal line thru the half-square triangle unit using a disappearing (purple) fabric marker. Align your ruler on the drawn line, leaving a $\frac{1}{4}$ " seam allowance above the point of the blue triangle. Cut. Repeat on the remaining part. Discard the small strip that is cut off. Make 240 units.



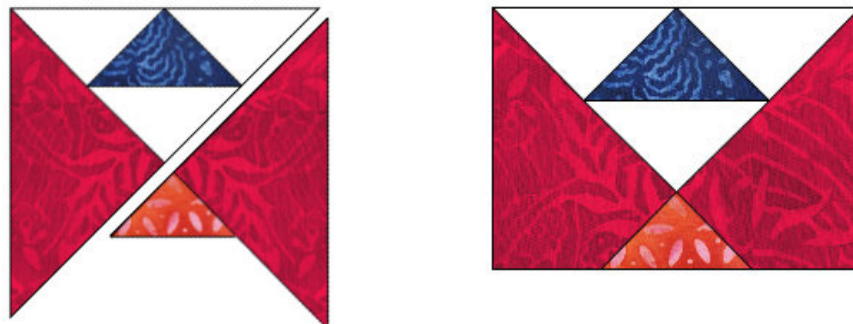
Cut 60 fabric A $4\frac{3}{8}$ " squares once diagonally. Add the triangles to 120 units made above to create corner units. Square to 4". Set the remaining triangle units aside.



Cut the fabric B $4\frac{3}{8}$ " squares once diagonally.

Cut the fabric C $3\frac{1}{4}$ " squares twice diagonally.

Combine these triangles with the triangle units, matching seams as shown. Trim to 4 " x $5\frac{1}{2}$ ". Make 120 star units.





Fanfare

Combine the units with the fabric E $5\frac{1}{2}$ " squares to complete the blocks. Square blocks to $12\frac{1}{2}$ ".



Sashing Strips:

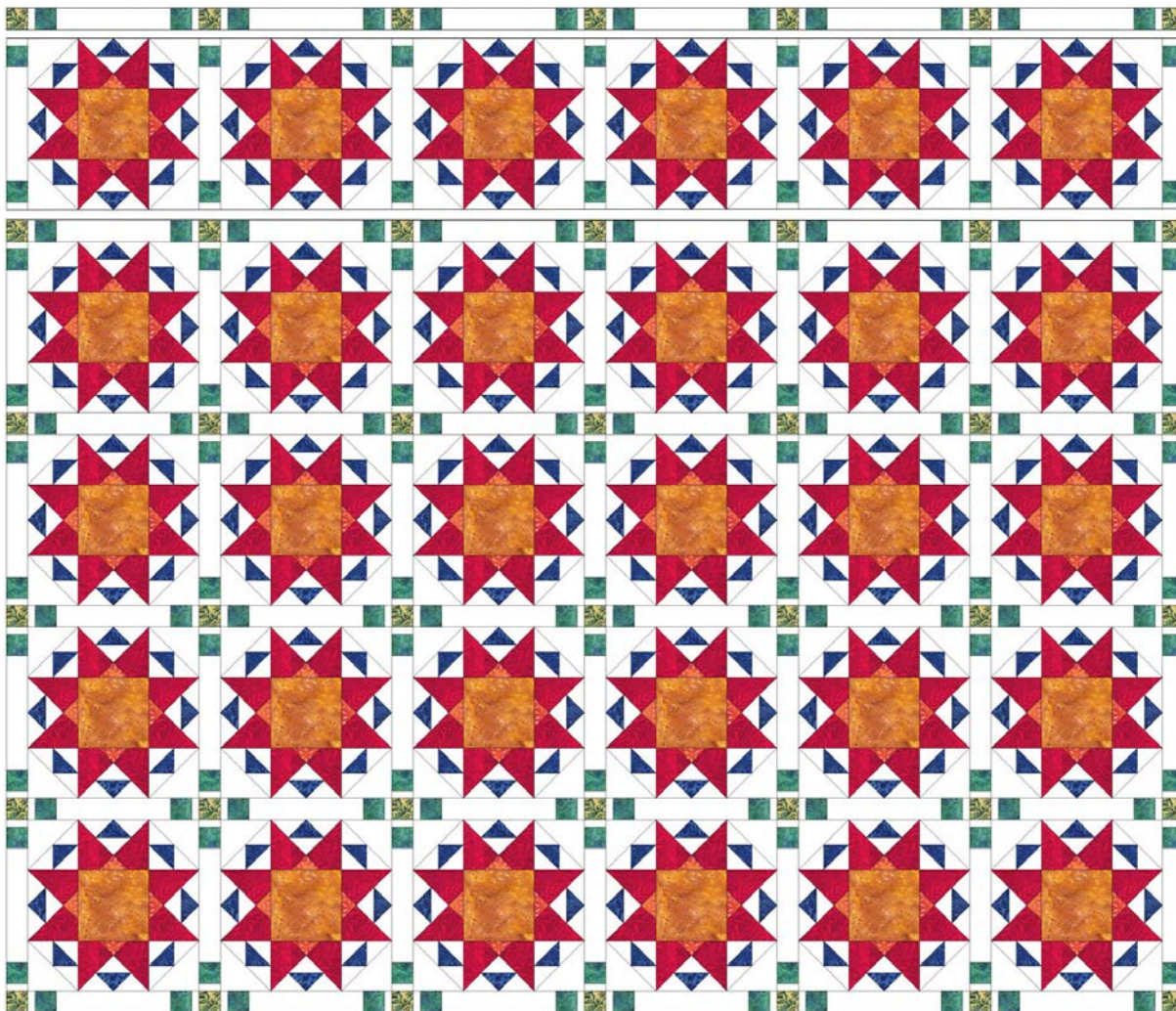
Make 71

Stitch two fabric A 1 " x WOF strips, two fabric G 2 " x WOF strips and one fabric A $8\frac{1}{2}$ " x WOF strip together as shown. Make four stripsets. Cut into 71 sashing strips 2 " x $12\frac{1}{2}$ ".



Assembly:

Combine the blocks, sashing strips and fabric F 2 " squares as shown to complete the quilt top.



Finishing:

Layer, baste and quilt as desired. Bind with fabric D.