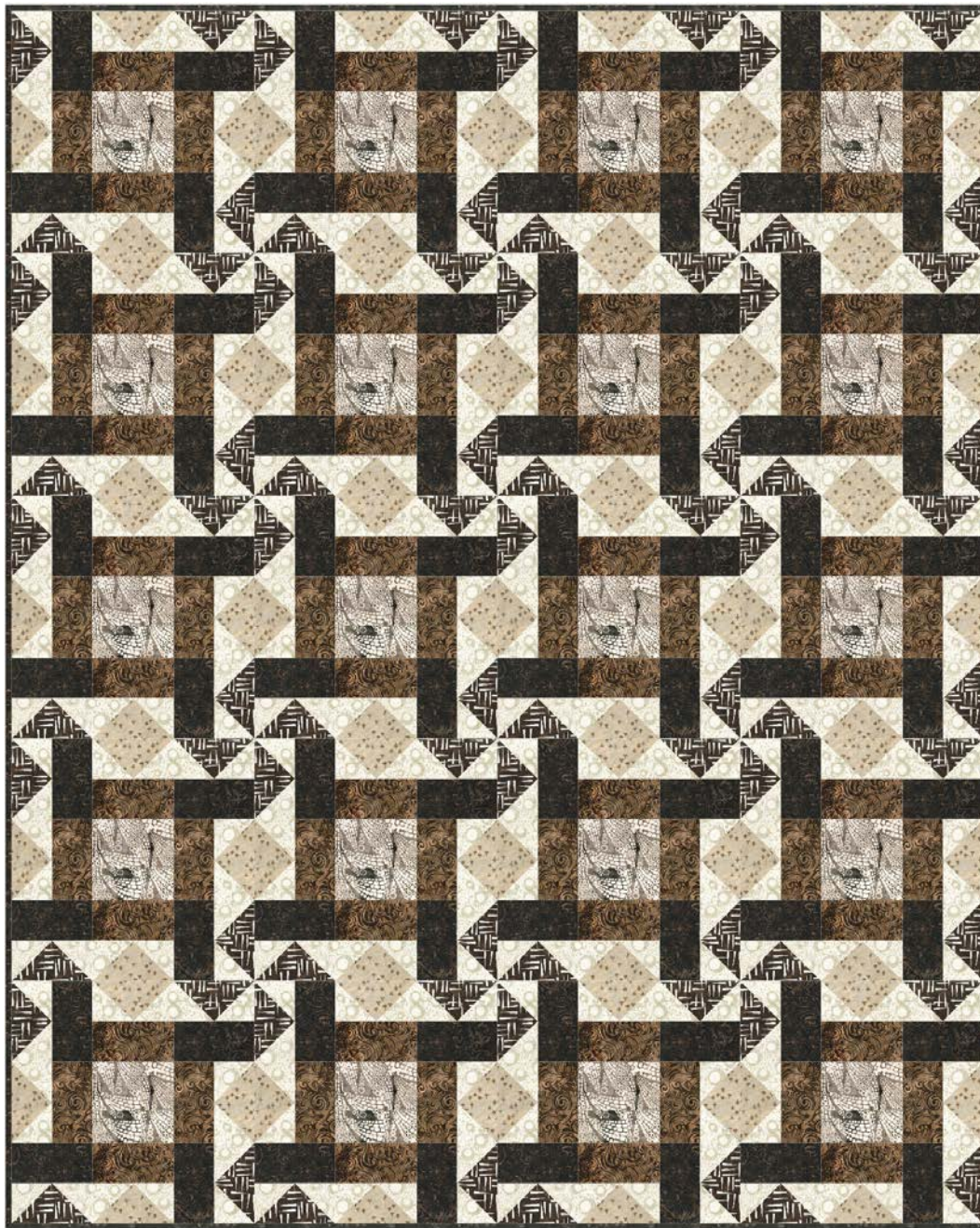


Poplar Bluff

designed by Project House 360
featuring Art Inspired - Lane With Poplar trees
SIZE: 60" x 75"

FREE
PROJECT










THIS IS A DIGITAL REPRESENTATION OF THE QUILT TOP, FABRIC MAY VARY.

PLEASE NOTE: BEFORE MAKING YOUR PROJECT, CHECK FOR ANY PATTERN UPDATES AT WINDHAMFABRICS.COM'S FREE PROJECTS SECTION.



Poplar Bluff

KEY	FABRIC	SKU	YD	CUTTING INSTRUCTIONS
A		241Q-10 Whisper	1 5/8	160 - 3 3/8" squares
B		237Q-12 Bark	1 1/4	80 - 3" x 5 1/2"
C		234Q-11 Sand	1	20 - 6 1/4" squares
D		238Q-13 Wood	1	20 - 6 1/4" squares
E		237Q-11 Elk	1 1/4	80 - 3" x 5 1/2"
F		235Q-6 Granite	3/4	20 - 5 1/2" squares
G		234Q-12 Wood	3/4	binding
		Backing:	4	
		Batting:	68" x 83"	



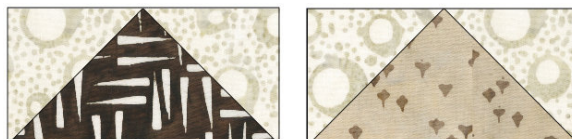
Poplar Bluff

Blocks:

Make 20

Use the enclosed technique sheet to make no-waste flying geese using 80 fabric A $3\frac{3}{8}$ " squares and 20 fabric D $6\frac{1}{4}$ " squares. Trim units to 3 " x $5\frac{1}{2}$ ". Make 80 units.

Make another 80 units in the same way using 80 fabric A $2\frac{3}{8}$ " squares and 20 fabric C $6\frac{1}{4}$ " squares.



Stitch two fabric A/fabric C geese and two fabric E 3 " x $5\frac{1}{2}$ " rectangles to one fabric F $5\frac{1}{2}$ " square as shown. Trim to $5\frac{1}{2}$ " x $15\frac{1}{2}$ ". Make 20 units.



Combine geese units as shown with two fabric B 3 " x $5\frac{1}{2}$ " rectangles and one fabric E 3 " x $5\frac{1}{2}$ " rectangle. Trim to $5\frac{1}{2}$ " x $15\frac{1}{2}$ ". Make 40 units.



Combine the units to complete the block. Square to $15\frac{1}{2}$ ". Make 20 blocks.

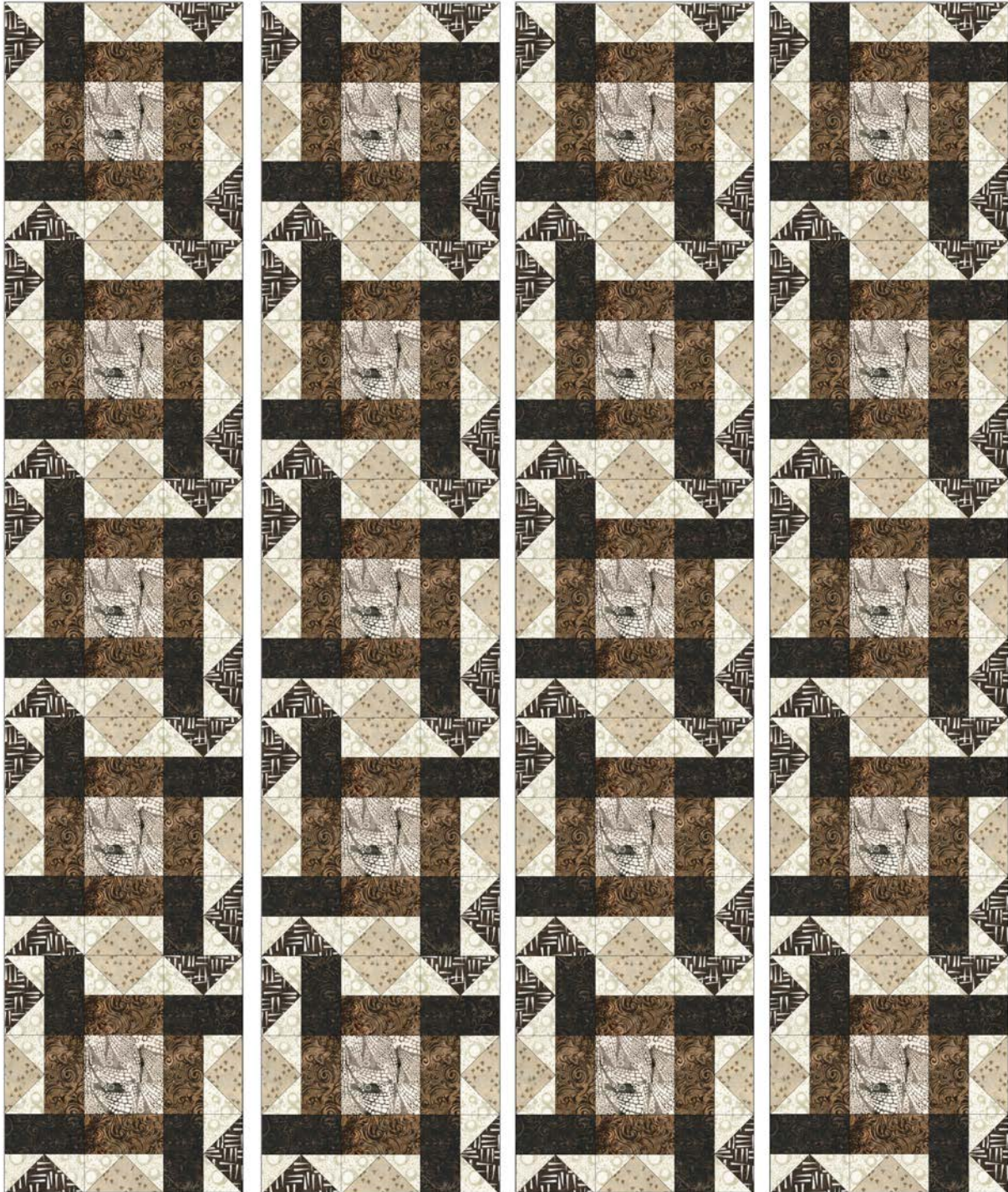




Poplar Bluff

Finishing:

Combine blocks as shown to complete quilt top.



Layer, baste and quilt as desired.
Bind with fabric G.