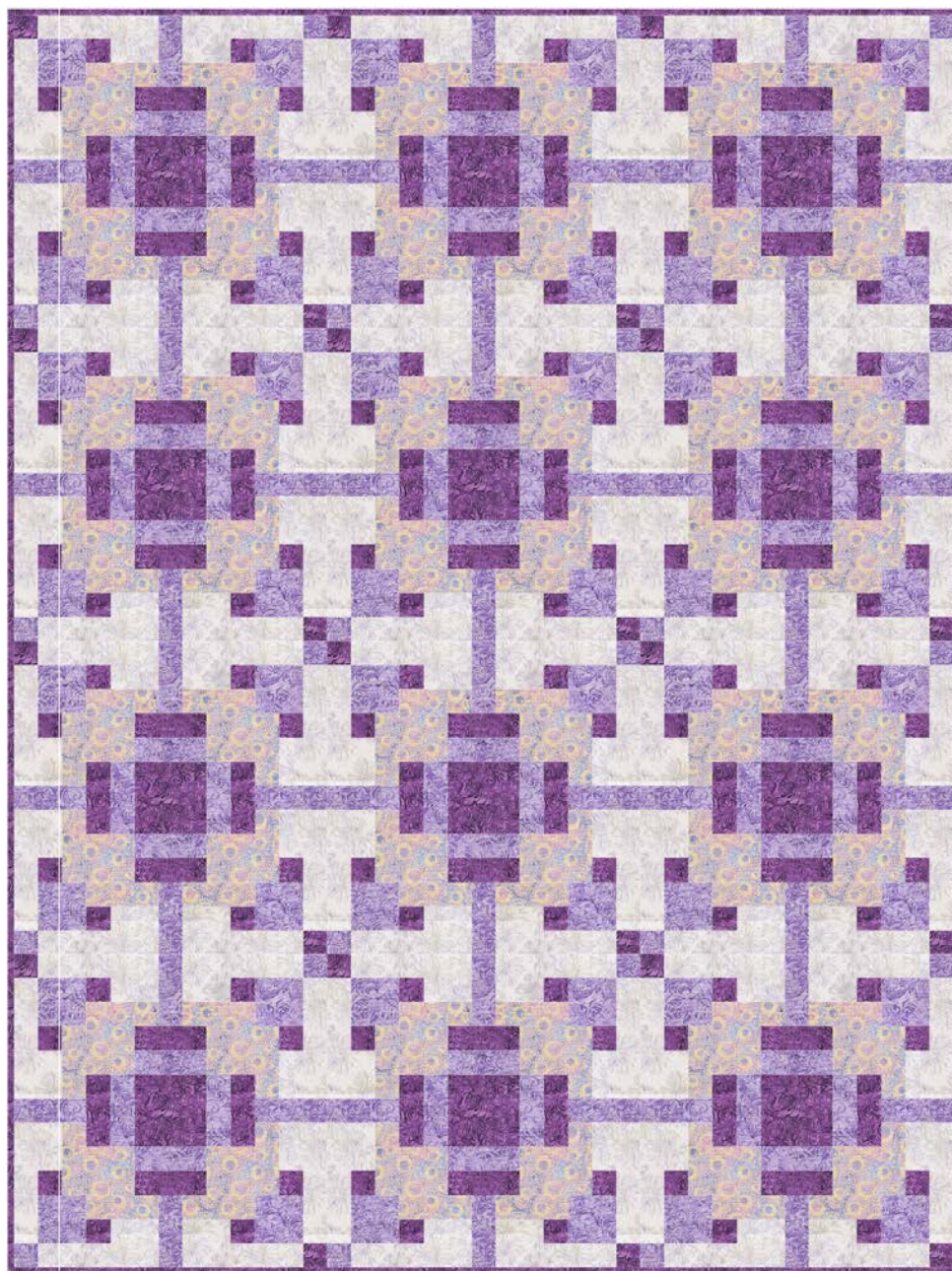


Foundry - Lavender

designed by Project House 360
featuring Art Inspired - House of Parliament

SIZE: 54" x 72"







FREE
PROJECT

THIS IS A DIGITAL REPRESENTATION OF THE QUILT TOP, FABRIC MAY VARY.

PLEASE NOTE: BEFORE MAKING YOUR PROJECT, CHECK FOR ANY PATTERN UPDATES AT WINDHAMFABRICS.COM'S FREE PROJECTS SECTION.



Foundry

KEY	FABRIC	SKU	YD	CUTTING INSTRUCTIONS
A		237Q-6 Purple	1 3/4	7 - 2 1/2" x WOF (width of fabric) binding 12 - 4 5/8" squares 48 - 1 7/8" x 4 5/8" 120 - 1 7/8" squares
B		233Q-8 Lilac	1 3/4	96 - 3 1/4" squares 48 - 1 7/8" x 4 5/8" 48 - 1 7/8" x 3 1/4" 48 - 1 7/8" squares
C		237Q-7 Lavender	1 3/8	48 - 3 1/4" squares 96 - 1 7/8" x 4 5/8" 24 - 1 7/8" squares
D		241Q-6 Moonbeam	1 3/8	48 - 3 1/4" squares 48 - 1 7/8" x 4 5/8" 48 - 1 7/8" x 3 1/4" 48 - 1 7/8" squares
		Backing:	3 1/2	
		Batting:	62" x 80"	

NOTE:

Make sure you're using an accurate scant 1/4" seam. To achieve this, refer to the seam allowance check instructions on page 5.

Blocks:

Make 12

Stitch one fabric A 1 7/8" x 4 5/8" rectangle with one fabric C 1 7/8" x 4 5/8" rectangle. Trim to 3 1/4" x 4 5/8". Make four units.





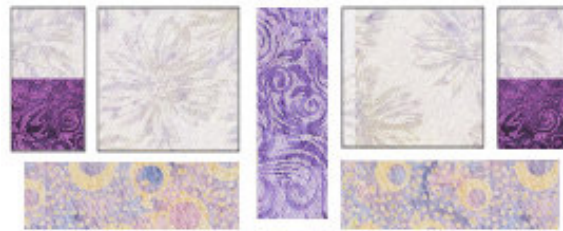
Foundry

Combine the units with one fabric A $4\frac{5}{8}$ " square and four fabric D $3\frac{1}{4}$ " squares to complete the block center. Square to $10\frac{1}{8}$ ".



Stitch two fabric A and two fabric B $1\frac{7}{8}$ " squares together in pairs.

Combine with two fabric B $3\frac{1}{4}$ " squares, two fabric D $1\frac{7}{8}$ " x $4\frac{5}{8}$ " rectangles and one fabric C $1\frac{7}{8}$ " x $4\frac{5}{8}$ " rectangle as shown. Trim to $4\frac{5}{8}$ " x $10\frac{1}{8}$ ". Make two units.



Stitch one unit to each side of the block center.



Stitch one fabric D $1\frac{7}{8}$ " x $3\frac{1}{4}$ " rectangle to one fabric B $3\frac{1}{4}$ " square. Make eight units.

Stitch two units to one fabric C $1\frac{7}{8}$ " x $4\frac{5}{8}$ " rectangle. Trim to $4\frac{1}{8}$ " x $7\frac{3}{8}$ ". Make four units.





Foundry

Stitch one fabric A $1\frac{7}{8}$ " square and one fabric D $1\frac{7}{8}$ " square together.

Stitch one fabric C $3\frac{1}{4}$ " square and one fabric B $1\frac{7}{8}$ " x $3\frac{1}{4}$ " rectangle together. Combine the units.

Stitch one fabric A $1\frac{7}{8}$ " square and one fabric B $1\frac{7}{8}$ " x $4\frac{5}{8}$ " rectangle together and add as shown. Trim to $4\frac{5}{8}$ " x 6 ". Make two units.



Stitch one fabric A $1\frac{7}{8}$ " square and one fabric D $1\frac{7}{8}$ " square together.

Stitch one fabric C $3\frac{1}{4}$ " square and one fabric B $1\frac{7}{8}$ " x $3\frac{1}{4}$ " rectangle together. Combine the units.

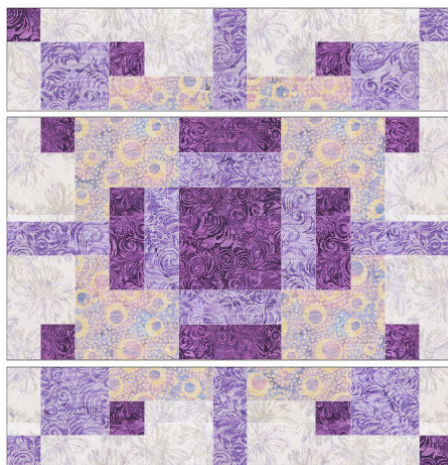
Stitch one fabric C $1\frac{7}{8}$ " square and one fabric B $1\frac{7}{8}$ " x $4\frac{5}{8}$ " rectangle together and add as shown. Trim to $4\frac{5}{8}$ " x 6 ". Make two units.



Combine the last three units. Trim to $4\frac{5}{8}$ " x $18\frac{1}{2}$ ". Make two units.



Add to the top and bottom of the block. Square to $18\frac{1}{2}$ ". Make 12 blocks.



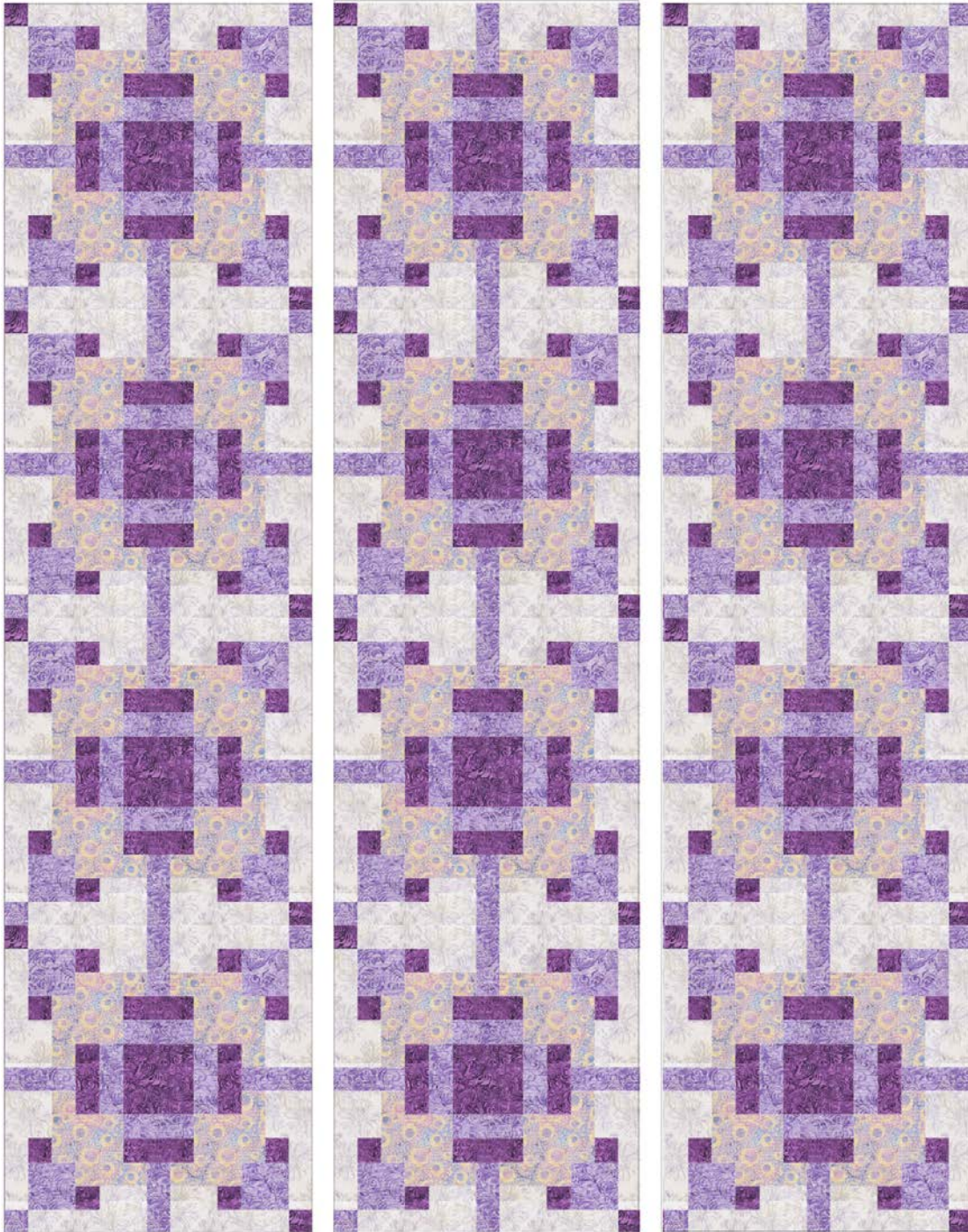


Foundry

Finishing:

Combine the blocks as shown to complete the quilt top.

Layer, baste and quilt as desired. Bind with the fabric A 2 1/2" x WOF strips.





Seam Allowance Check:

Use this method to find your perfect scant $1/4$ " seam.

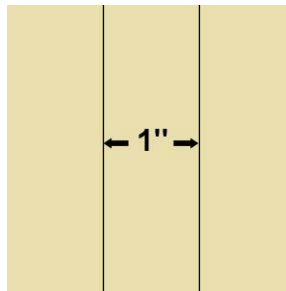
To check if your seam is accurate, cut three $1\ 1/2$ " x 3" pieces from scrap fabric.

Sew the pieces together along the 3" side, using what you believe is a $1/4$ " seam.

Press away from the center piece.

Measure.

The center piece should be exactly 1" wide.



If, when you measure, the center is less than 1", your seam allowance is too large. You'll need to move your needle position to the right.

If it's more than 1", your seam allowance is too small. You'll need to move your needle position to the left.

Refer to your machine's manual for instructions on changing your needle position.

Repeat the test until your center strip measures exactly 1".