

Cypress Blooms

Quilt design by **Heidi Pridemore**

featuring the Art Inspired Collection **Wheat Field with Cypresses** by **Vincent Van Gogh**

SIZE: 56" x 63"

FREE
PROJECT







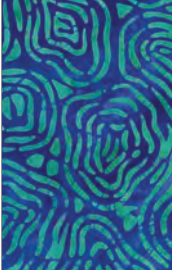



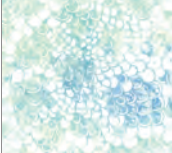


THIS IS A DIGITAL REPRESENTATION OF THE QUILT TOP, FABRIC MAY VARY.

PLEASE NOTE: BEFORE MAKING YOUR PROJECT, CHECK FOR ANY PATTERN UPDATES AT WINDHAMFABRICS.COM'S FREE PROJECTS SECTION.



Wheat Fields with Cypresses

KEY	FABRIC	SKU	YD	CUTTING INSTRUCTIONS
A		203Q-8 pool	2/3	<ul style="list-style-type: none"> • Cut three 4 ¼" x WOF strips. Sub-cut the strips into twenty-one 4 ¼" squares. Cut the squares across both diagonals to make eighty-four triangles. • See instructions to cut thirteen petals. • See instructions to cut thirteen flower centers.
B		209Q-2 multi	2/3	<ul style="list-style-type: none"> • Cut three 4 ¼" x WOF strips. Sub-cut the strips into twenty-one 4 ¼" squares. Cut the squares across both diagonals to make eighty-four triangles. • See instructions to cut thirteen petals.
C		201Q9 cobalt	1/4	<ul style="list-style-type: none"> • See instructions to cut thirteen petals.
D		202Q-11 jade	1/4	<ul style="list-style-type: none"> • See instructions to cut thirteen petals.
E		206Q-7 royal	1/4	<ul style="list-style-type: none"> • See instructions to cut thirteen petals.
F		201Q-10 teal	1/4	<ul style="list-style-type: none"> • See instructions to cut thirteen petals.
G		211Q-6 aquamarine	1-1/3	<ul style="list-style-type: none"> • Cut thirteen 1 ½" x WOF strips. Sew the strips together end to end with diagonal seams and cut eight 1 ½" x 63 ½" strips. • See instructions to cut thirteen petals. <p>FOR BINDING:</p> <ul style="list-style-type: none"> • Cut six 2 ½" x WOF strips for the binding.
H		208Q-6 pool	1/4	<ul style="list-style-type: none"> • See instructions to cut thirteen petals.
I		206Q-8 chartreuse	5/8	<ul style="list-style-type: none"> • See instructions to cut ten stems. • See instructions to cut twelve left side leaves. • See instructions to cut twelve right side leaves.
J		200Q-9 grass	2-1/2	<ul style="list-style-type: none"> • Cut three 12 ½" x 63 ½" length of fabric strips. • Cut five 4 ¼" x WOF strips. Sub-cut the strips into forty-two 4 ¼" squares. Cut the squares across both diagonals to make (168) triangles.
		Backing 208Q-7 ocean	3-3/4	<ul style="list-style-type: none"> • Cut two 64" x WOF strips. Sew the strips together and trim to 64" x 71" for the pieced back.
		Batting		<ul style="list-style-type: none"> • Cut one 64" x 71"



Wheat Fields with Cypresses

Block Assembly

1. Following the manufacturer's instructions, trace the listed number of each template onto the paper side of the fusible web. Roughly cut out each template about 1/8" outside the drawn lines.

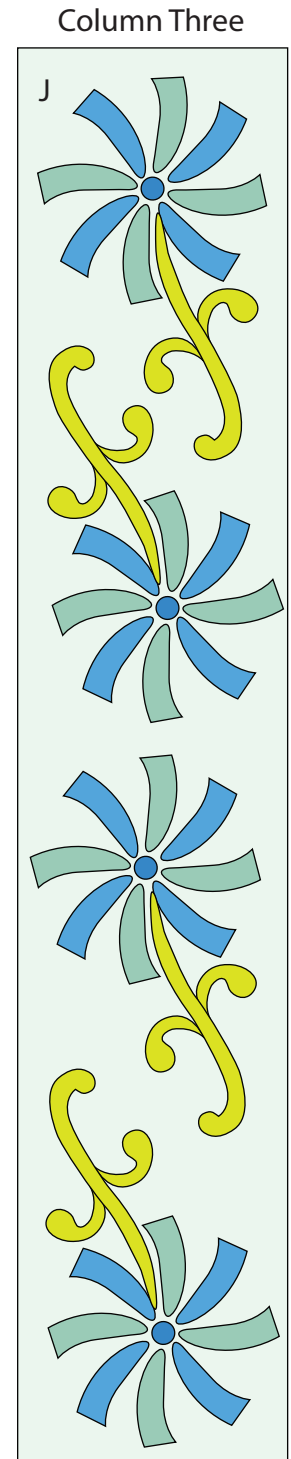
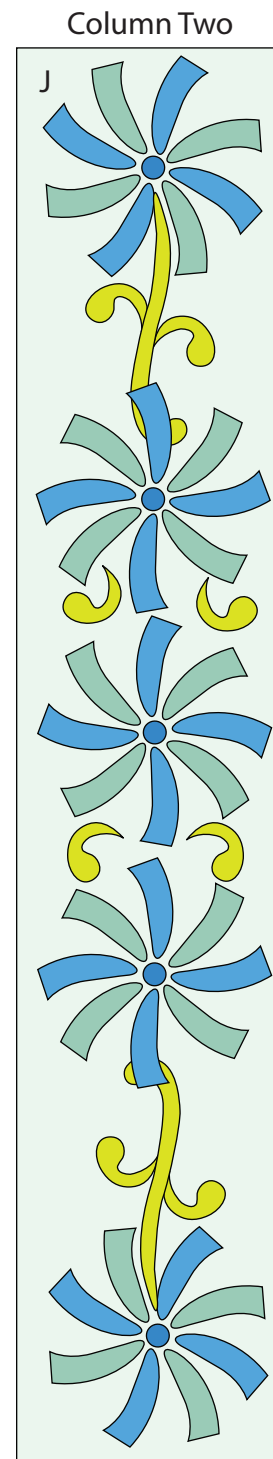
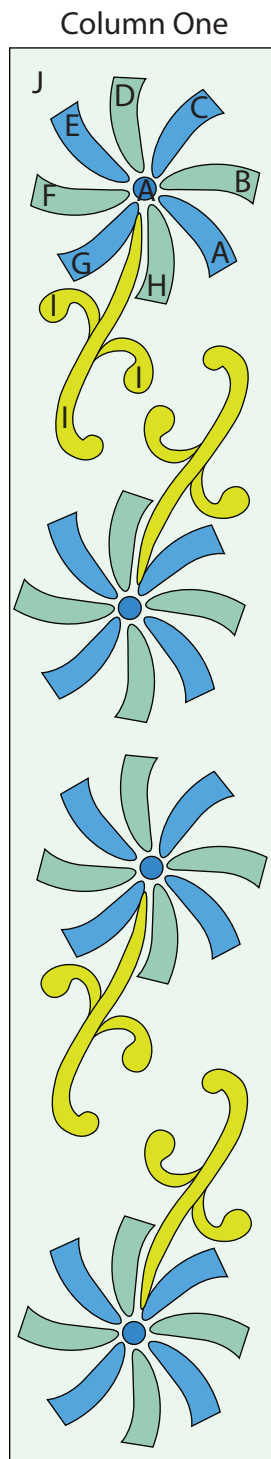
2. Press each template onto the wrong side of the fabrics as listed on the templates. Cut out each template on the drawn lines.

3. Refer to the Figure 1 to arrange and press the four flowers, four flower centers, four stems, four left side leaves and four right side leaves onto one 12 1/2" x 63 1/2" Fabric J strip. The flowers are made of one petal from each fabric, Fabric A through Fabric H.

4. Finish the raw edges of each shape with a decorative stitch such as a buttonhole or satin stitch to make one Column One.

5. Repeat Steps 3-4 and use Figure 2 for fabric identification and location to make one Column Two.

6. Repeat Steps 3-4 and use Figure 3 for fabric identification and location to make one Column Three.





Wheat Fields with Cypresses

7. Sew two Fabric J triangles, one Fabric A triangle and one Fabric B triangle together to make one Unit 1 block (Fig. 4). Repeat to make eighty-four Unit 1 blocks total.

8. Sew twenty-one Unit 1 blocks together. Sew one $1\frac{1}{2}'' \times 63\frac{1}{2}''$ Fabric G strip to each side of the new strip to make one Column Four (Fig. 5). Repeat to make four Column Fours total.

Unit 1
make 84

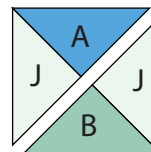


Fig. 4

Column Four
make 4

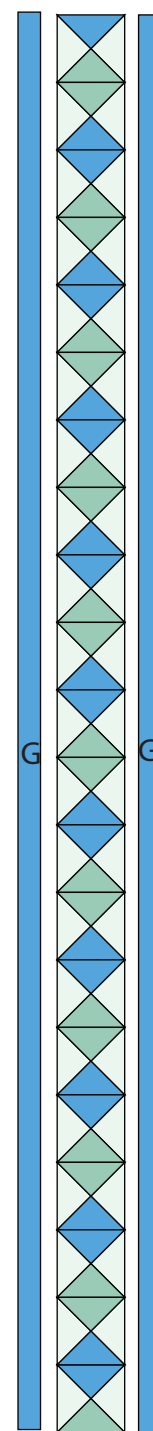


Fig. 5

Quilt Top Assembly

(Refer to the Quilt Diagram on Page 4 while assembling the quilt top.)

9. Sew the four Column Fours and the three pieced columns, in numerical order, together, alternating them to make the quilt top.

Finishing

10. Layer and quilt as desired.

11. Sew the six $2\frac{1}{2}'' \times$ WOF Fabric G strips together, end to end with 45-degree seams, to make the binding. Fold this long strip in half, lengthwise with wrong sides together, and press.

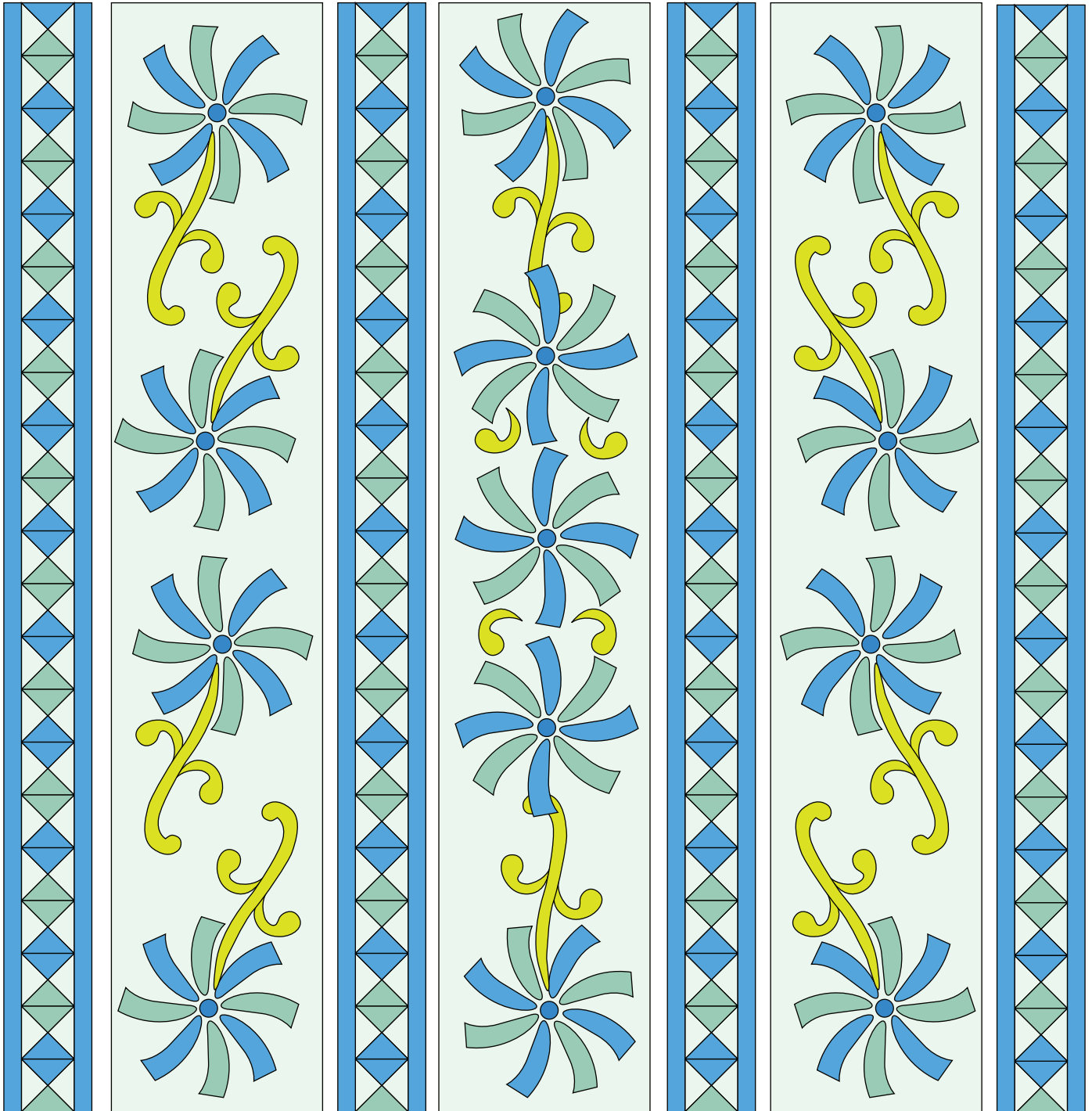
12. Bind as desired.



Wheat Fields with Cypresses

SIZE: 56" X 63"

QUILT DIAGRAM

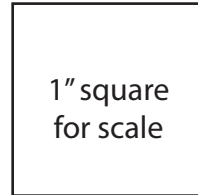




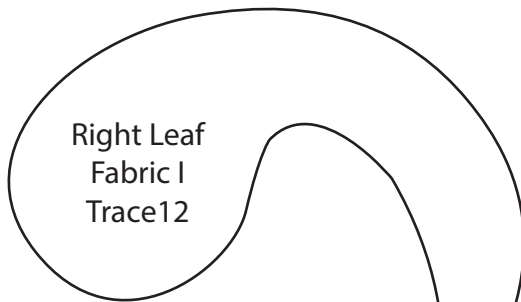
Wheat Fields with Cypresses

TEMPLATES

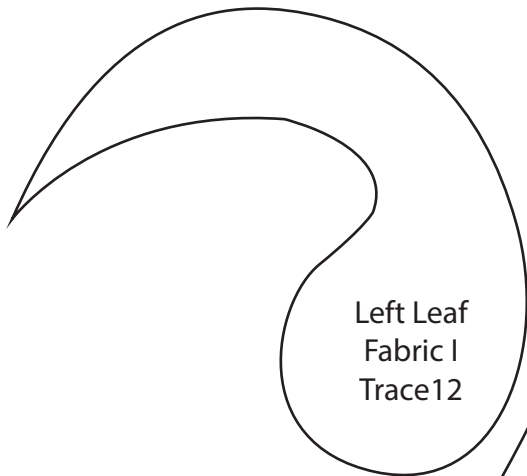
Templates
100% scale
Reversed for Fusible Applique



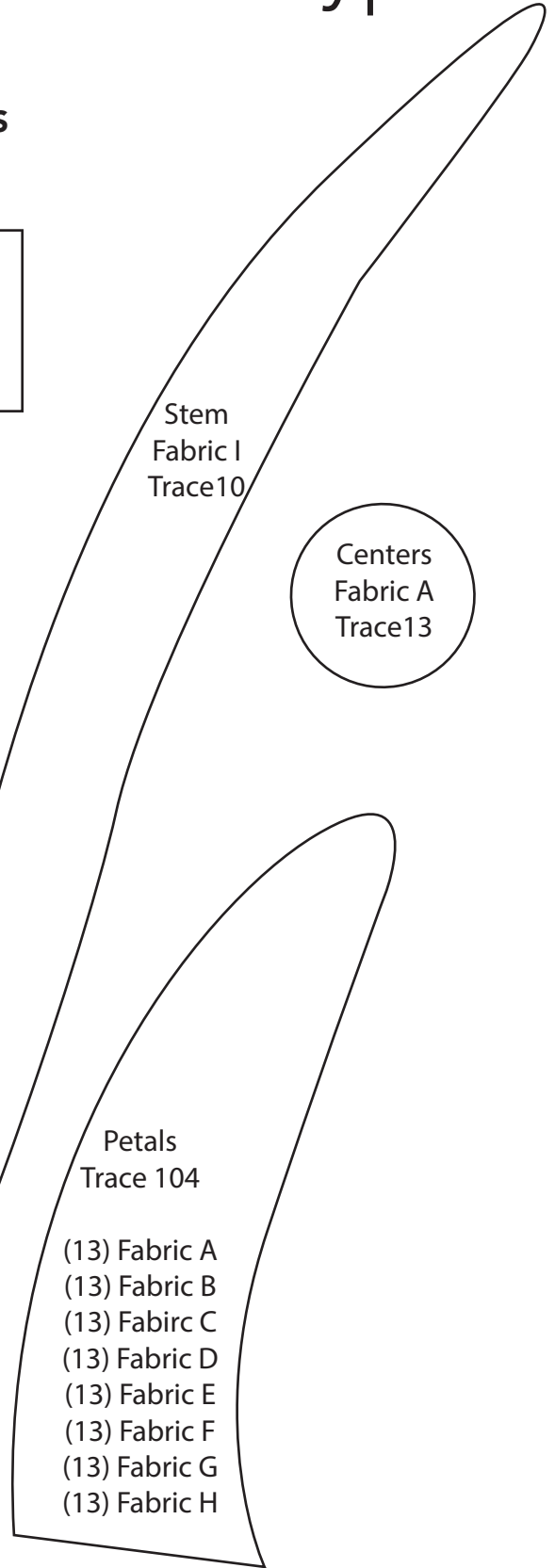
1" square
for scale



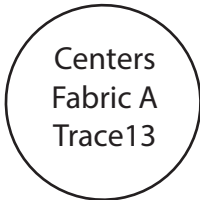
Right Leaf
Fabric I
Trace12



Left Leaf
Fabric I
Trace12



Stem
Fabric I
Trace10



Centers
Fabric A
Trace13

Petals
Trace 104

- (13) Fabric A
- (13) Fabric B
- (13) Fabric C
- (13) Fabric D
- (13) Fabric E
- (13) Fabric F
- (13) Fabric G
- (13) Fabric H